

POWERFLEX®

PART NUMBER

PFR19-219

DESCRIPTION

REAR WISHBONE TO HUB

INSTALLATION GUIDE

Contents (parts per pack):

- 4 x Polyurethane Bushes
- 1 x PTFE/Silicone Grease
- 4 x Stainless Steel Sleeves
- 4 x M12 Washers
- 4 x Zinc Plated Mild Steel Shells

Please read the complete fitting instructions and check package components before fitment. These fitting instructions are to be used as a guide and in conjunction with workshop manual.

It is recommended that:

- all work to be carried out by a licensed technician;
- all safety precautions adhered to;
- wheel alignment to be checked and adjusted as required after any suspension work.
- All fasteners must be tensioned to manufacturer's torque settings.



Fitting Instructions:

1. Remove the original rubber bushes from the arm, ensuring that the original shell is also removed from the arm.
2. Clean any dirt and corrosion from the bore of the arm and file off any sharp edges.
3. Press the mild steel shell into the arm square with the lip on the outside of the arm, as shown in figure 1.
4. Press the polyurethane part into the shell so the top hat section sits on the arm as shown in figure 1.
5. Apply some of the supplied grease to the bore of the polyurethane part.
6. Insert the stainless steel sleeve into the bore of the bush until it sits flush within the bush.
7. Place the M12 Washer onto the end face of the Bush and refit the mount, remembering to tension all hardware to manufacturers recommended torque settings.

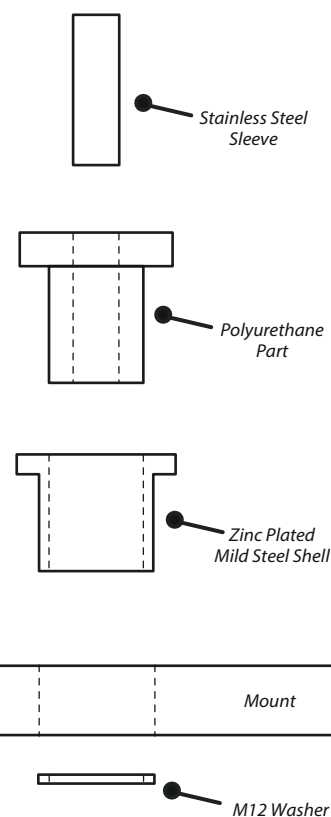


Figure 1